

# WILLIAMSON CONSTRUCTION EQUIPMENT LIMITED

WEBSITE: [www.wcelimited.co.uk](http://www.wcelimited.co.uk)

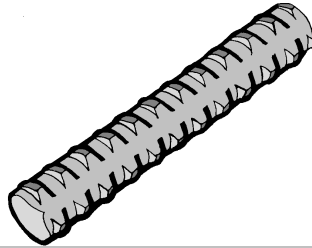
E-MAIL: [hireandsales@wcelimited.co.uk](mailto:hireandsales@wcelimited.co.uk)

## 15mm TIE ROD SYSTEM

### 15mm TIE ROD

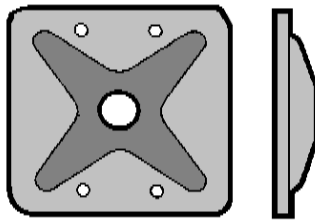
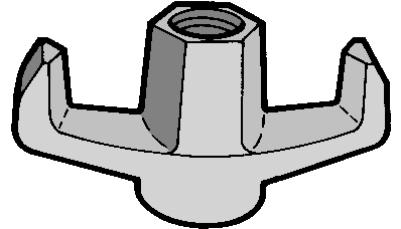
Continuous intermittent, self cleaning, coarse pitch thread. Available in a range of lengths.

SWL = 110kN



### WING NUT

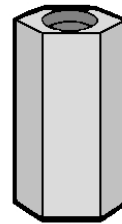
Standard knock-on wing nut, ensures fast & efficient assembly



### STANDARD WATER PLATE

175mm x 150mm pressed water plate with nailing holes.

SWL = 80kN

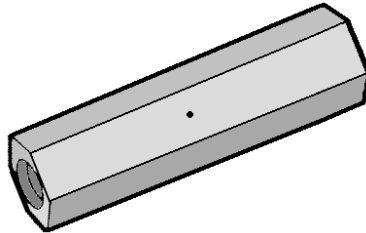


### HEXAGON NUT

50mm long Hexagon Nuts can be used as an alternative to a wing nut when space is limited.

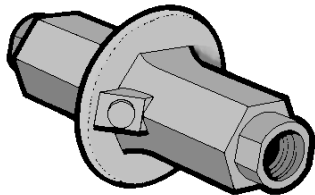
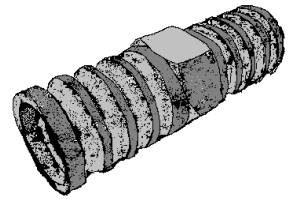
### TIE ROD CONNECTOR

Used to safely connect two lengths of tie rod. Available with central 'stop' pin.



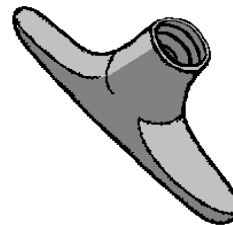
### RIBBED WATER BARRIER NUT

Barrier for use in water retaining structures when thru-tie system is used.



### FLANGED WATER BARRIER NUT

Barrier for use in water retaining structures when thru-tie system is used. Reducers (£0.11ea) are available for spacer tube.

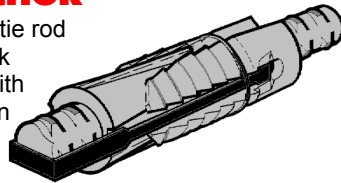


### WELD-ON ANCHOR

Anchor that can be welded to sheet piling or other steel structures. Full perimeter weld required along with load testing prior to use.

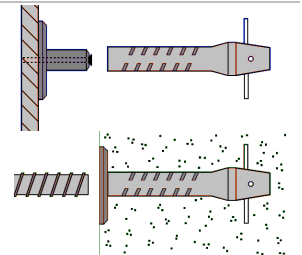
### MECHANICAL ANCHOR

Expands to securely fasten tie rod into existing concrete or rock structures. Typically used with single-sided formwork and in shoring applications. (Must be tested before use)



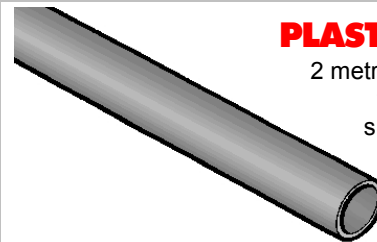
### FORM ANCHOR

Cast in concrete anchor. Ideal for multi-lift pours. The cone is nailed to the formwork and the anchor is then pushed onto the cone. Once poured, tie rod can be screwed into the anchor.



### PLASTIC SPACER CONE

Used with plastic spacer tube to allow accurate spacing of formwork shutters, giving a neat chamfered tie hole.



### PLASTIC SPACER TUBE

2 metre length of plastic spacer tube. Used for accurately spacing formwork shutters and allows the re-use of tie rod.

For full details of the Thru-Tie System, and quotations/advice on Formwork projects large and small, contact:

#### NEWCASTLE DEPOT (HEAD OFFICE)

TEL: 0191 - 215 0222

FAX: 0191 - 266 4859

#### CARLISLE DEPOT

TEL: 01228 - 514 814

FAX: 01228 - 599 815