

**WEBSITE: [www.wcelimited.co.uk](http://www.wcelimited.co.uk)**

**E-MAIL: [hireandsales@wcelimited.co.uk](mailto:hireandsales@wcelimited.co.uk)**

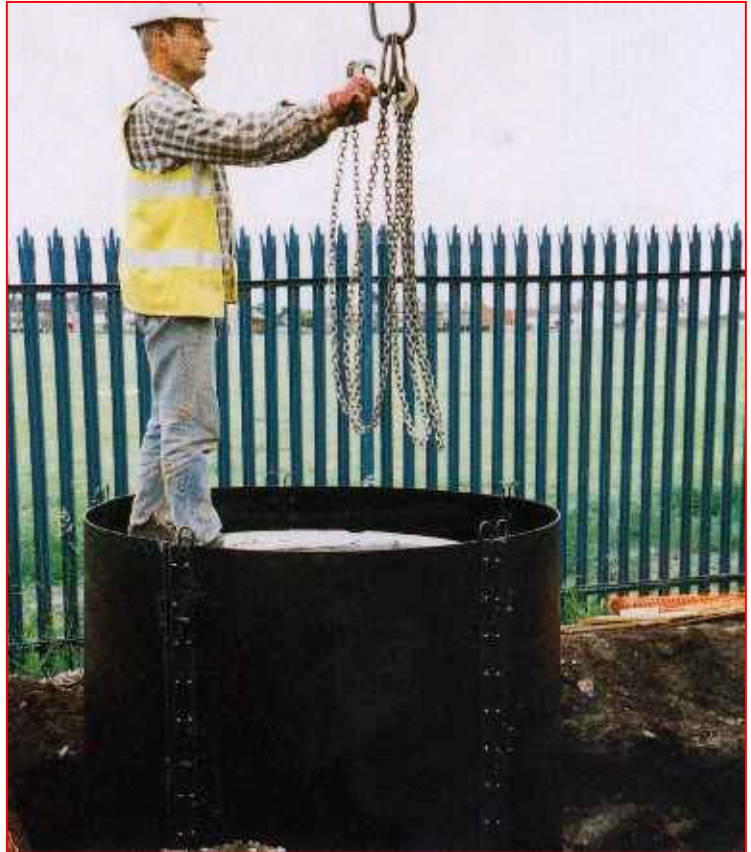
The NEW Plashore Polypropylene Manhole Shutters<sup>®</sup> have been designed to eliminate cleaning costs which are incurred on traditional steel Manhole Shutters. They comprise of a 6mm Polypropylene sheet which has been formed with 50mm returns on each side, which are then attached to 50mm steel angles. Each panel is fitted with two lifting points.

Polypropylene has self-cleaning properties which prevent the concrete sticking to them, enabling them to be used more frequently without the need for shotblasting or extensive labour cleaning charges. The panels are lightweight, yet have been sufficiently tested to provide a new dimension in pouring concrete around manhole rings.

**Useful Data**

Shutter panel A is 1276mm wide  
Shutter panel B is 1030mm wide  
1800mm or 900mm high panels

Plashore Polypropylene Manhole Shutters are protected by Copyright.



Nominal Internal dia. Of Manhole.	Manhole Wall Thickness	No. of Shutters required to form Manhole	
		Shutter A	Shutter B
(mm)	(mm)		
675	65	2	1
900	75	1	3
1050	85	3	1
1200	100	1	4
1350	112	3	2
1500	115	5	-
1800	115	5	1
2100	120	5	2
2400	135	5	3
2700	162	5	4

**NEWCASTLE DEPOT (HEAD OFFICE)**

**UNIT 16, WESLEY DRIVE  
BENTON SQUARE INDUSTRIAL ESTATE  
NEWCASTLE UPON TYNE  
NE12 9UP**

**TEL: 0191 - 215 0222  
FAX: 0191 - 266 4859**

**CARLISLE DEPOT**

**ST NINIAN'S ROAD  
UPPERBY  
CARLISLE  
CA2 4NE**

**TEL: 01228 - 514 814  
FAX: 01228 - 599 815**