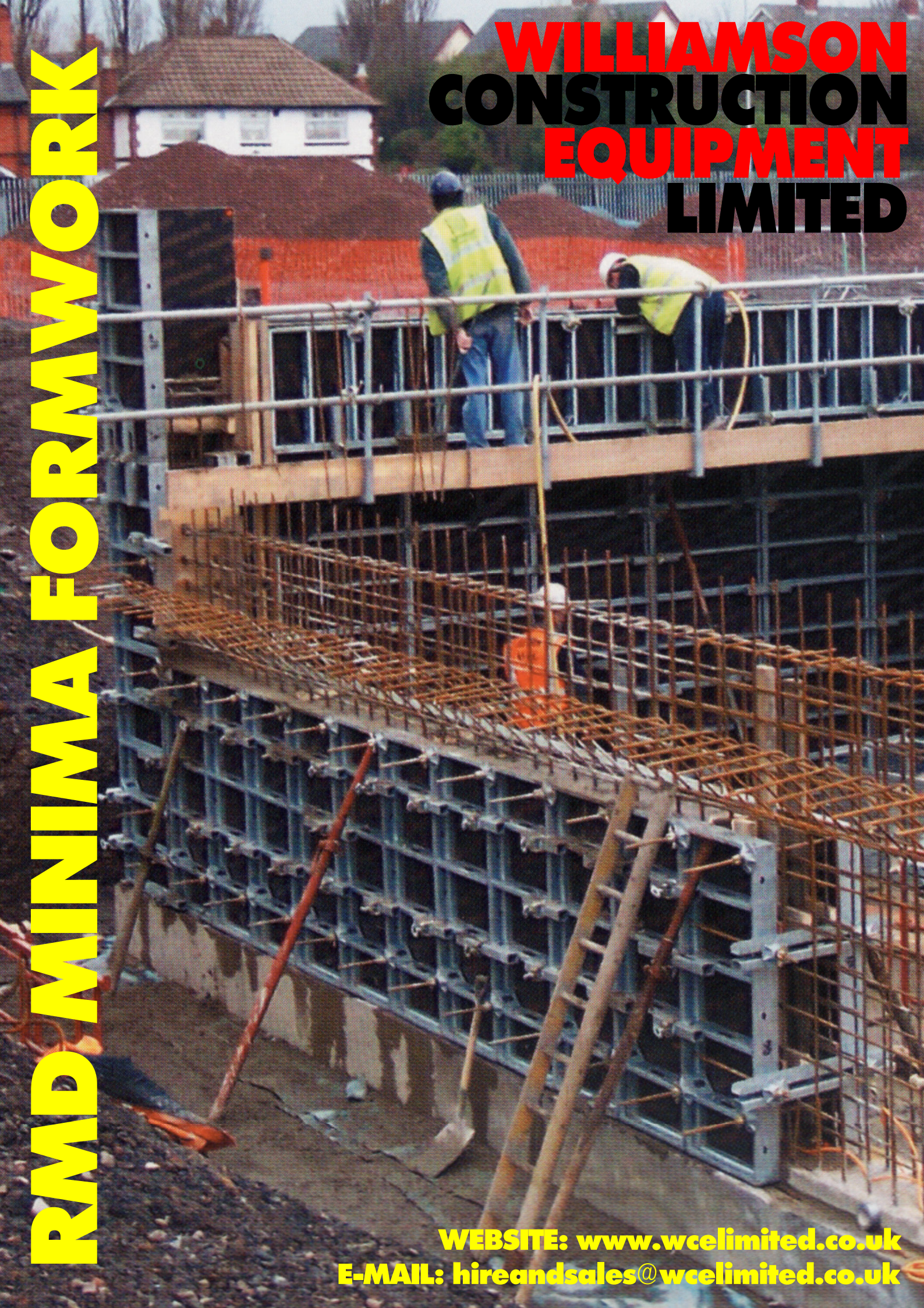


**RMD MINIMA FORMWORK**

**WILLIAMSON  
CONSTRUCTION  
EQUIPMENT  
LIMITED**



**WEBSITE: [www.wcelimited.co.uk](http://www.wcelimited.co.uk)  
E-MAIL: [hireandsales@wcelimited.co.uk](mailto:hireandsales@wcelimited.co.uk)**

Williamson Construction Equipment Limited are stockists in the North East and Cumbria, of the RMD Kwikform Minima Formwork System.

## introducing new minima

*“Minima is RMD Kwikform’s latest modular wall formwork panel for concrete pressures up to  $60\text{kN/m}^2$ . The lightweight panels weigh only  $30\text{kg/m}^2$ , allowing them to be easily and safely set by hand. And with an extensive range of accessories, Minima has the versatility to adapt to most building shapes, quickly and easily. Minima is the result of RMD Kwikform responding to the needs of the construction industry, where our products and services are available through our extensive network of local branches. This means that when you deal with RMD Kwikform, you talk to the people who understand the working environment, technical difficulties and challenges you face.”*

## applications

Minima can be used within any sector on a variety of applications, including:

- Walls
- Columns
- Buttresses
- Culverts
- Abutments and Piers
- Service Cores
- Basements
- Tanks
- Foundations
- Pile Caps



## features and benefits

- Minima’s lightweight panels – only  $30\text{kg/m}^2$  - can be easily set by hand, **minimising the need for crange, reducing costs and skilled labour requirements.**
- Clamps are easily tightened, **prolonging their working life and reducing labour requirements.**
- Panels can be clamped together using the Aligning Panel Clamp and up to  $25\text{m}^2$  | lifted by crane if required, **increasing the productivity of the system.**
- Minima is available in 18 panel sizes, **allowing virtually any configuration to be erected.** Tie positions support  $1.21\text{m}^2$  of formwork when using  $2.7 \times 0.9\text{m}$  panel assemblies, **reducing the number of ties required, lowering costs and construction times.**
- Minima inner corners have 2 degree stripping clearance, **allowing panels to be easily removed once curing has taken place.**



# the components



## Panels

Description	Weight (Kg)
Minima Panel – 1200 × 300mm	19.5
Minima Panel – 1200 × 450mm	24.8
Minima Panel – 1200 × 600mm	29.6
Minima Panel – 1200 × 750mm	34.5
Minima Panel – 1200 × 900mm	39.0
Minima Panel – 1500 × 300mm	24.7
Minima Panel – 1500 × 450mm	30.3
Minima Panel – 1500 × 600mm	35.9
Minima Panel – 1500 × 750mm	41.7
Minima Panel – 1500 × 900mm	47.4
Minima Panel – 2700 × 300mm	43.2
Minima Panel – 2700 × 450mm	52.8
Minima Panel – 2700 × 600mm	63.4
Minima Panel – 2700 × 750mm	72.0
Minima Panel – 2700 × 900mm	81.6

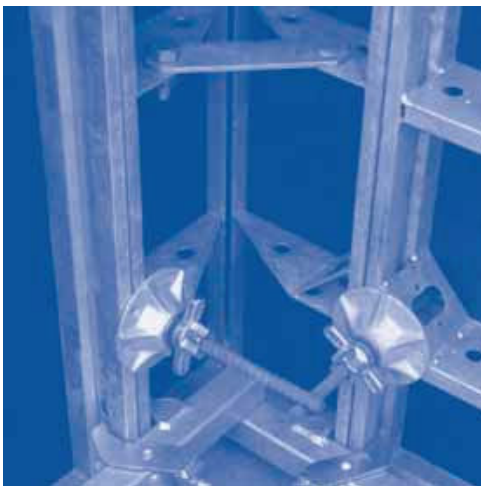


## Multi Purpose Panels

Description	Weight (Kg)
Minima MP Panel – 1200 × 700mm	37.0
Minima MP Panel – 1500 × 700mm	39.2
Minima MP Panel – 2700 × 700mm	60.1

## Alignment Props

Description	Weight (Kg)
Minima Alignment Prop - Medium	22.9
Minima Alignment Prop - Short	12.7

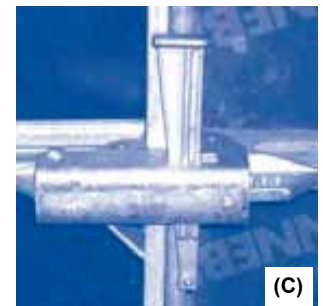
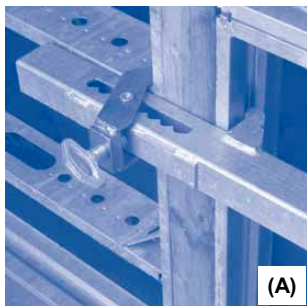


## Inner Corners

Description	Weight (Kg)
Minima Inner Corner 1200mm	41.4
Minima Inner Corner 1500mm	37.9
Minima Inner Corner 2700mm	66.2

## Hinged Corners

Description	Weight (Kg)
Minima Hinge Corner 1200 × 300mm	39.6
Minima Hinge Corner 1500 × 150mm	27.8
Minima Hinge Corner 1500 × 300mm	41.3
Minima Hinge Corner 2700 × 150mm	49.2
Minima Hinge Corner 2700 × 300mm	71.7



## Clamps

Description	Weight (Kg)
(A) Minima Adjustable Clamp	5.0
(B) Minima Alignment Clamp	2.9
(C) Minima Wedge Clamp	3.4
(D) Minima Corner Clamp	6.1

# the components



## Tie Rod Components

Description	Weight (Kg)
1000mm Tie Rod	1.5
1500mm Tie Rod	2.3
Maxima Tie Plate 15	1.2
Minima Waler Plate 230mm	2.4
50mm Hexagon Nut	0.2
Minima Edge Tie Bearing (left)	2.4



## Crane Hook

Description	Weight (Kg)
Minima Crane Hook	8.2



## Minima Access Bracket

Description	Weight (Kg)
Minima Access Bracket*	13.4
Superslim 19mm Pin and R Clip	0.3

\* Supplied with scaffold tube handrail system and scaffold boards



## Ultraguard\*\*

Description	Weight (Kg)
Ultraguard Barrier 2550mm	17.3
Ultraguard Barrier 3150mm	25.0
Ultraguard Post 1.2m	2.2

\*\* An alternative to using scaffold tube as handrail. Available on request.



## Alignment Rails

Description	Weight (Kg)
Maxima Alignment Rail 750	8.1
Maxima Alignment Rail 1500	16.1

## Nuts and Bolts

Description	Weight (Kg)
Minima Waler Tie 300	0.8
Minima Tension Bolt 190	1.0
Minima MP Bolt	0.6
Minima MP Nut	0.5

For full details of the RMD Minima Formwork system, and quotations/advice on Formwork projects large and small, contact:

**WILLIAMSON  
CONSTRUCTION  
EQUIPMENT  
LIMITED**

**WEBSITE:** [www.wcelimited.co.uk](http://www.wcelimited.co.uk)

**E-MAIL:** [hireandsales@wcelimited.co.uk](mailto:hireandsales@wcelimited.co.uk)

Wesley Drive, Benton Square Industrial Estate, Newcastle upon Tyne, NE12 9UP.  
Telephone: (0191) 215 0222. Fax: (0191) 266 4859

St. Ninian's Road, Upperby, Carlisle, Cumbria, CA2 4NE.  
Telephone: (01228) 514814. Fax: (01228) 599815

Other products supplied include:

**Beam Clamps**  
**Column Clamps**  
**Crowd Control Barriers**  
**Adjustable Manhole Shutters**  
**Manhole Braces**  
**Telescopic Props & Trench Struts**  
**Roadforms**  
**Road Plates**  
**Scaffold Boards**  
**Scaffold Fittings**  
**Soldier System (Strongbacks)**  
**Site Fencing**  
**Trestles**  
**Trench, Drag & Manhole Boxes**  
**Trench Shoring Lifting Equipment**  
**Trench Sheets**